



Bacon County, Georgia

Bexley Property

424± TOTAL ACRES



AUCTIONEERS & REALTORS
P.O. Box 370 • Shellman, GA 39886
(229) 679-2223 • 1-877-679-2223



Vince Barfield
Auctioneer/Broker
GAL# 2663, AAL #5018
FLAL #AB2863 - FLAL #AU3959

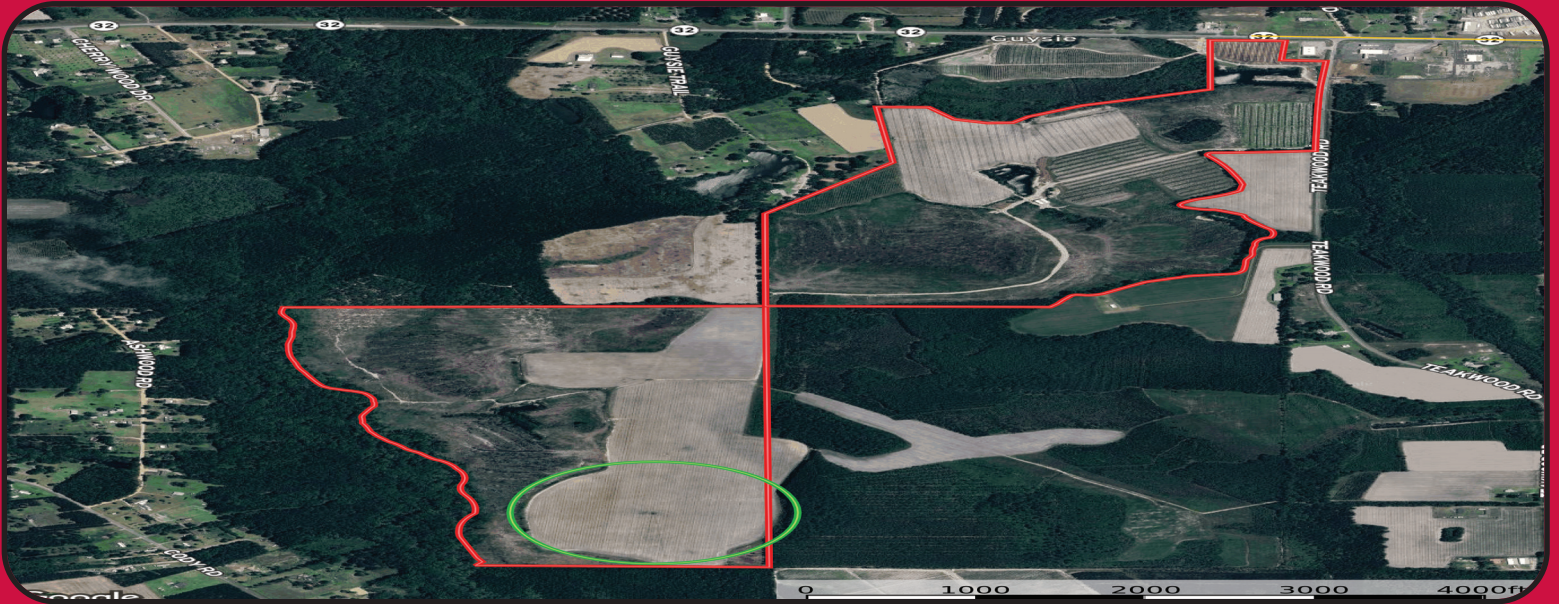


This property is loaded
with investment potential
with endless improvement
avenues to pursue.

Contact Barfield Auctions, Inc.
For Complete Details
229-679-2223
vince@barfielddauctions.com

Bacon County, Georgia

Asking Price \$3,200,000.00



- 100± TOTAL ACRES OF ROW CROP LAND
- 44± ACRES IRRIGATED LAND
- 34± ACRES OF 1 YEAR OLD PATRICIA BLUEBERRIES WITH OVERHEAD IRRIGATION
- 30± ACRES OF LAND BEING PREPARED TO REPLANT BLUEBERRIES WITH TRUNK LINES IN PLACE AND 90 LOADS OF BARK ON PROPERTY
- 4" Well
- 16" Well With 300 HP Electric Motor For Blueberries
- 8" Well With Diesel Motor And Generator For Irrigation Pivot
- Pond With Diesel Pump For Overhead On Blueberries
- Pole Barn For Equipment
- 250± ACRES OF CUTOVER TIMBER THAT CAN BE CLEARED AND PUT INTO BLUEBERRY PRODUCTION OR CULTIVATED LAND.
- 3 Ponds

DIRECTIONS TO PROPERTY:

From Alma, GA travel west on Hwy 32 for 3 8/10 miles. Turn left on Teakwod Road and travel 3/10 of a mile. The property entrance is located on the right.